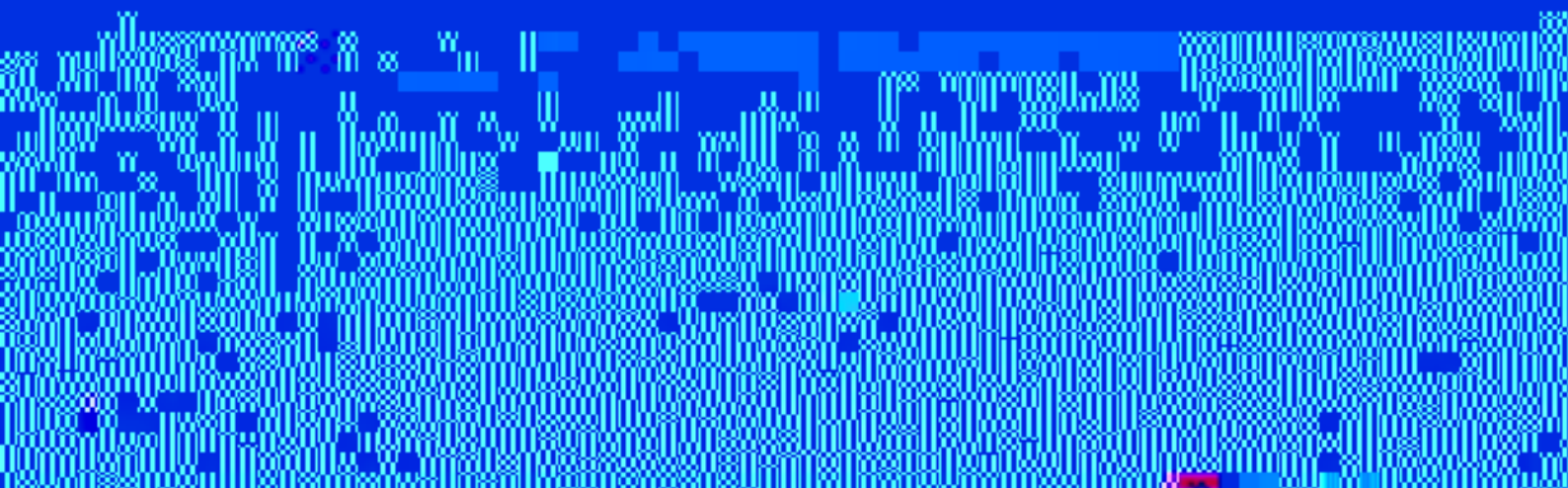
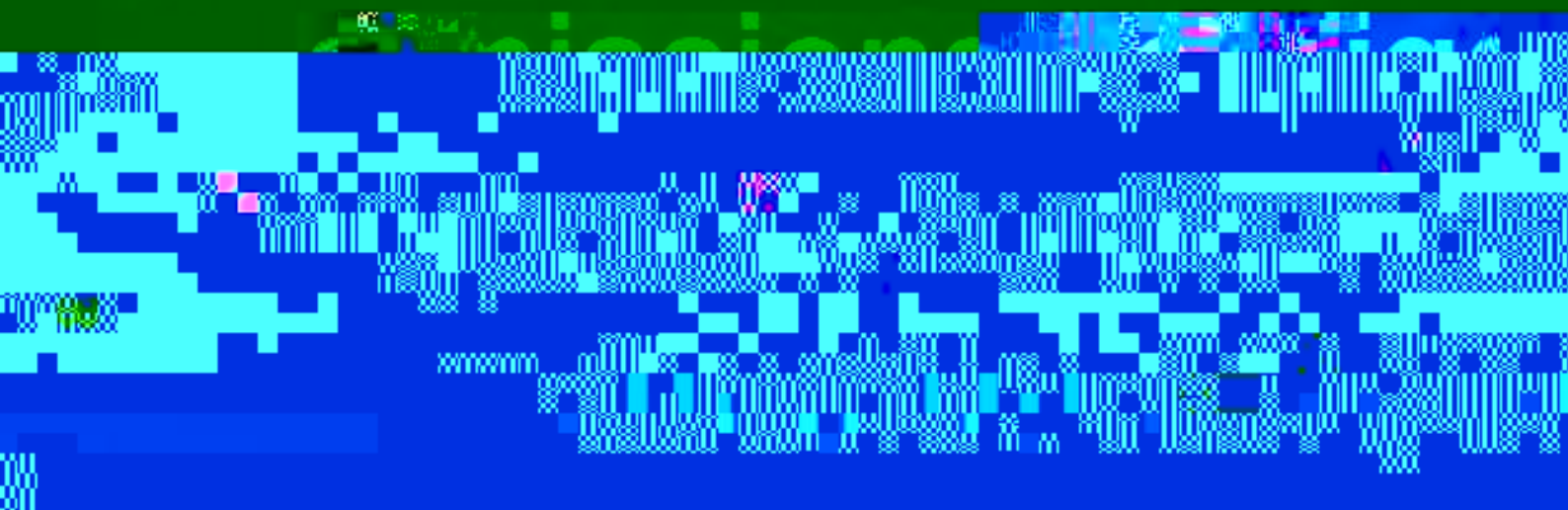
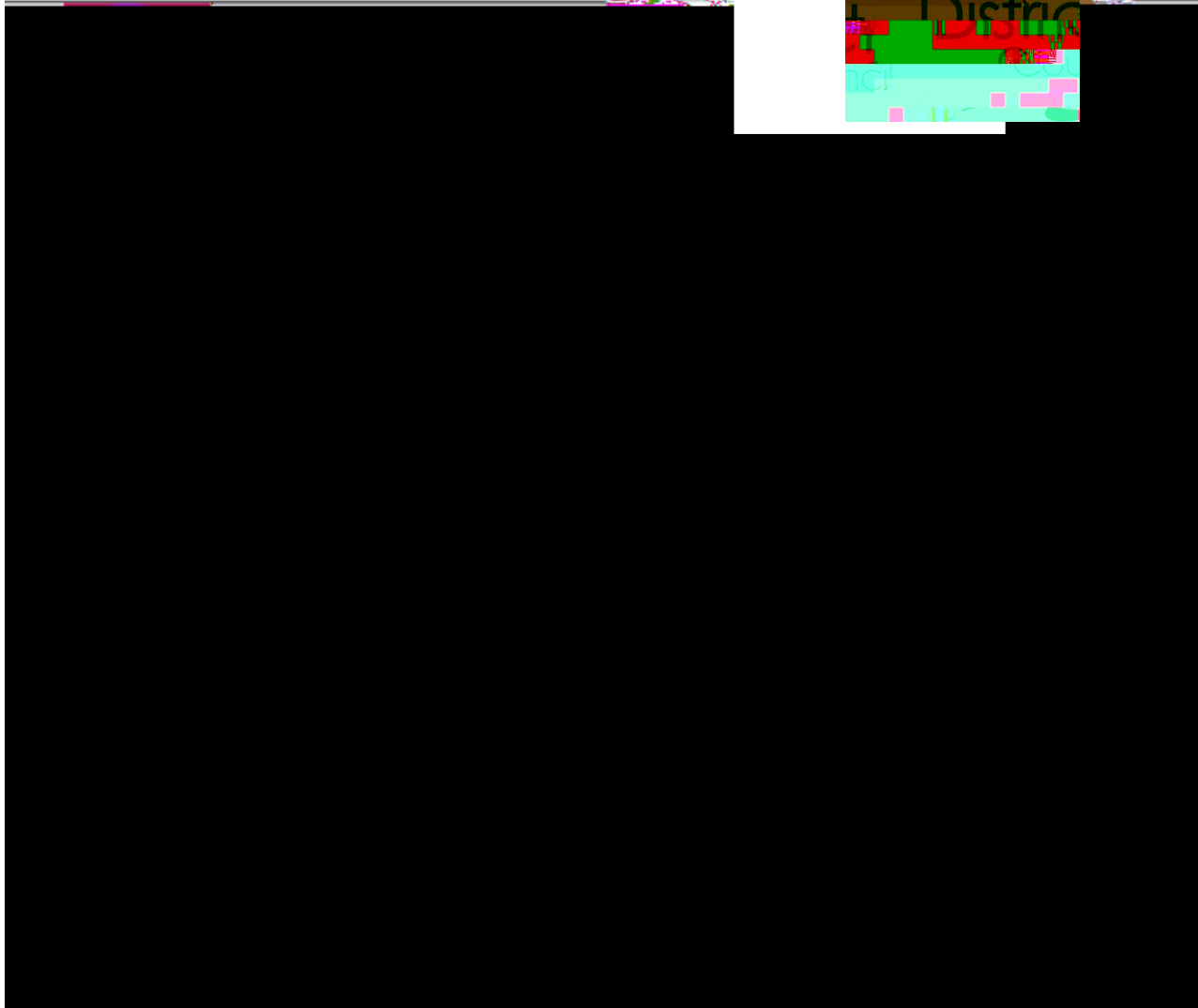
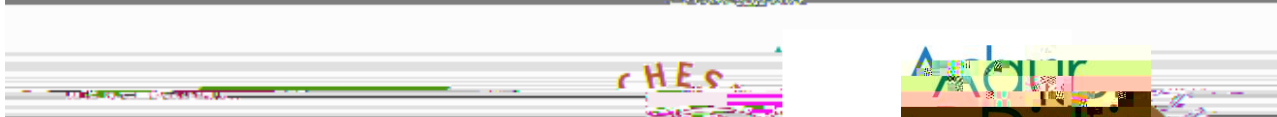


# Air quality





---

---

- 

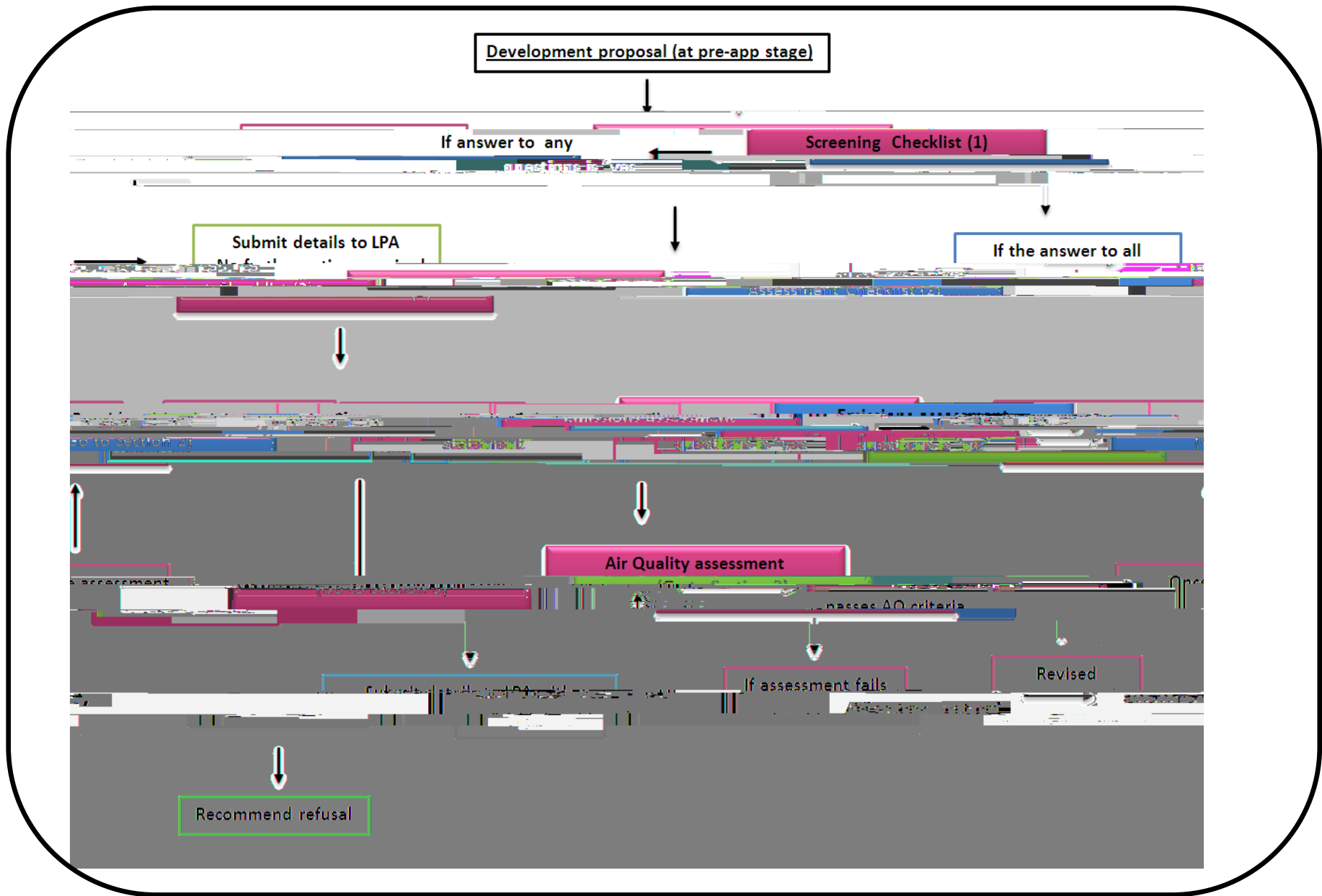
- 

---

---







*Paragraph 188*

*“Early engagement has significant potential to improve the efficiency and effectiveness of the planning application system for all parties.”*

*Paragraph 120*

*“To prevent unacceptable risks from pollution and land instability, planning policies and decisions should ensure that new development is appropriate for its location. The effects (including cumulative effects) of pollution on health, the natural environment or general amenity, and the potential sensitivity of the area or proposed development to adverse effects from pollution, should be taken into account...”*

*Paragraph 124*

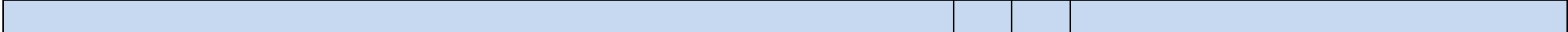
*“Planning policies should sustain compliance with and contribute towards EU Limit Values or national objectives for pollutants, taking into account the presence of Air Quality Management Areas and the cumulative impacts on air quality from individual sites in local areas. Planning decisions should ensure that any new development in Air Quality Management Areas is consistent with the local Air Quality Action Plan.*





---













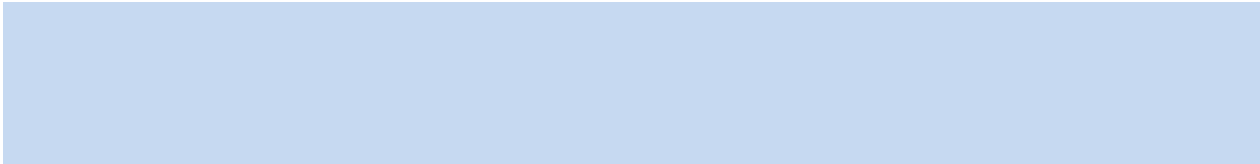




- 
- 
- 

- 
- 

*Note: Further detail of the air quality assessment requirements can be found in Appendix 7 (separate document).*









•

---

---

---

---

---

---

---

