

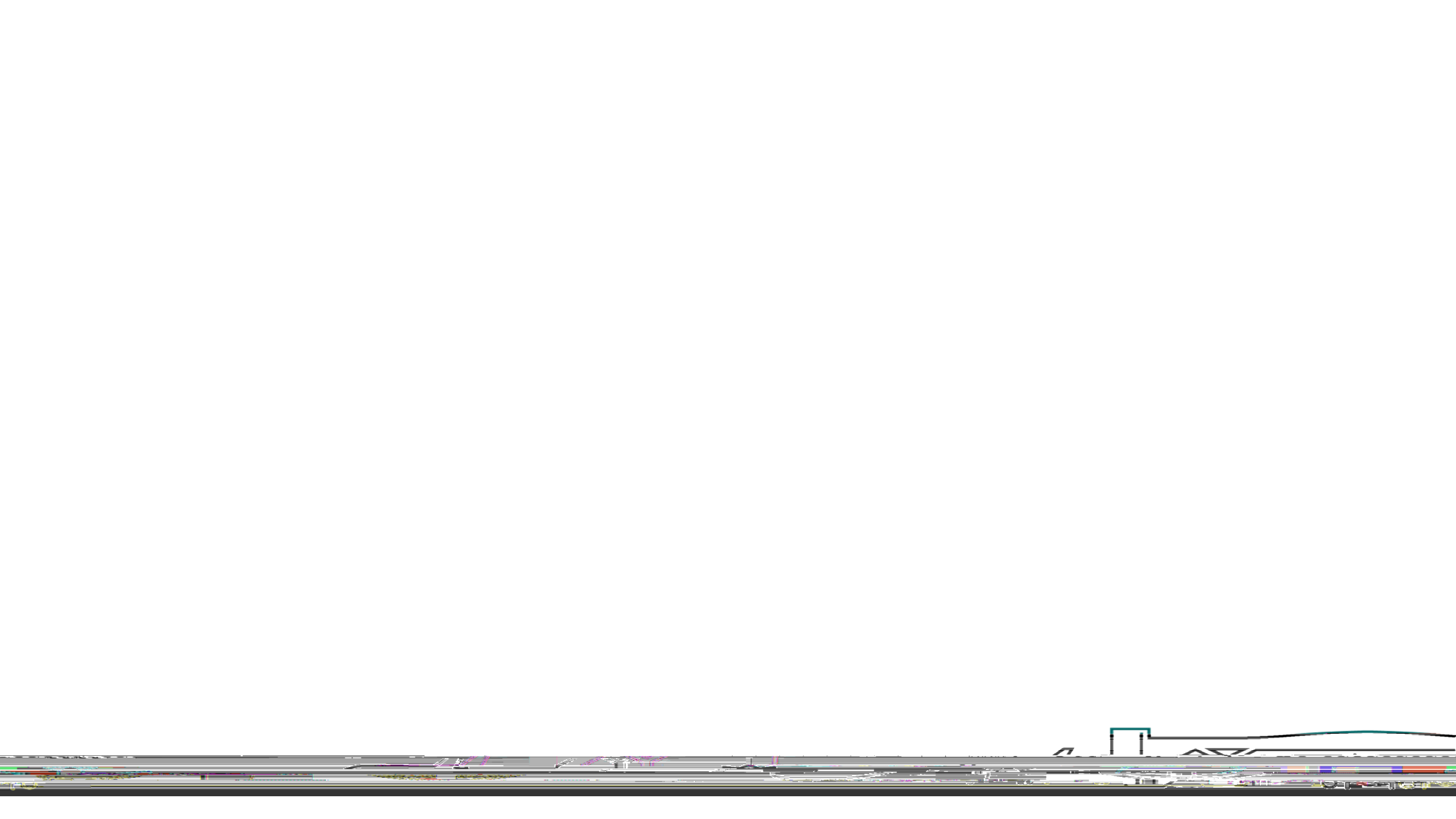
Economic Value Report

Richard Lennard, Economic Partnerships Manager

Crawley Economic Recovery Taskforce Group

21 July 2021

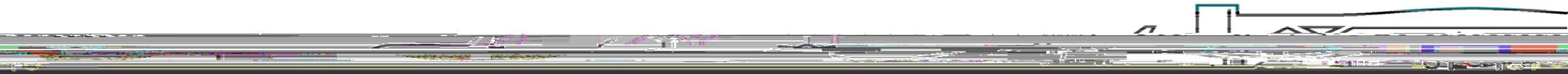




Economic value of Gatwick in 2020 and beyond

Gatwick Airport provides **significant value to the local economy**.

In 2020, Gatwick represented **a total of 36,700 jobs and £2.1bn in gross value added (GVA) in the UK** through the economic activity on site, in the supply chains to those firms, and to businesses that locate



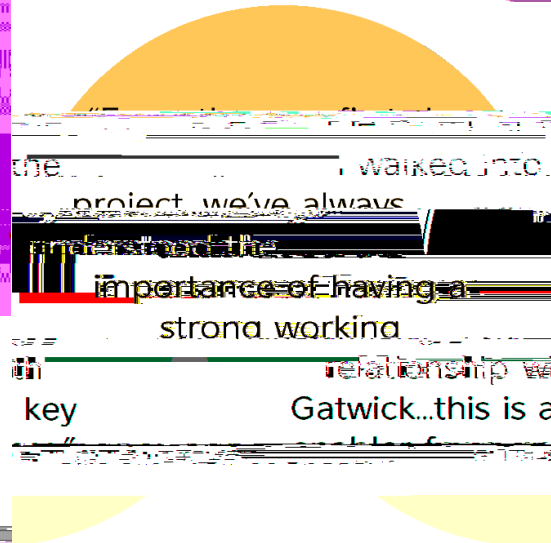
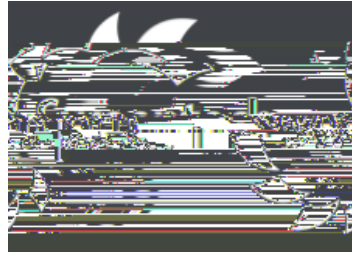
Žr p f < f „ R n g p e) R f Š g m ě f r R n) J " ' d r f z } g p f

	00 074	00 000	04 070	00 400	00 000
	04 000	00 000	00 000	00 000	00 000
Coast to Capital	04 000	04 000	04 000	04 400	00 404
	110 000	00 000	00 000	00 000	00 000
	450 000	40 000	00 000	124 000	170 500
	200 300	51 500	108 700	158 500	222 400
					of which Five Authorities
Nurse positions (UK-wide)	71.200	18.200	36.500	57.700	79.500
al	51,200	13,100	28,200	39,700	56,500
					of which Coast to Capital
s	64,100	16,500	34,800	50,700	71,200
					of which Five Authorities

Narrative key themes



Case studies



one... I walked into...
project, we've always
understand the
importance of having a
strong working
relationship with
key Gatwick...this is a

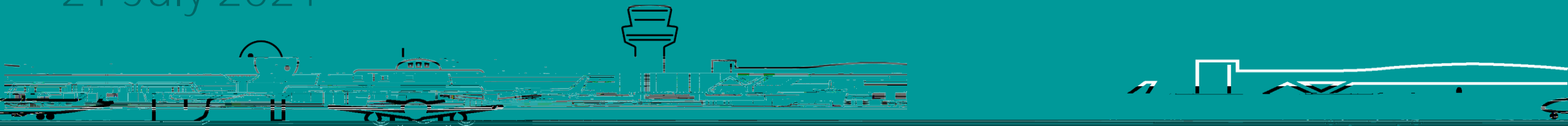
"After 27 years I still love
working for Gatwick, you
can have a viable career

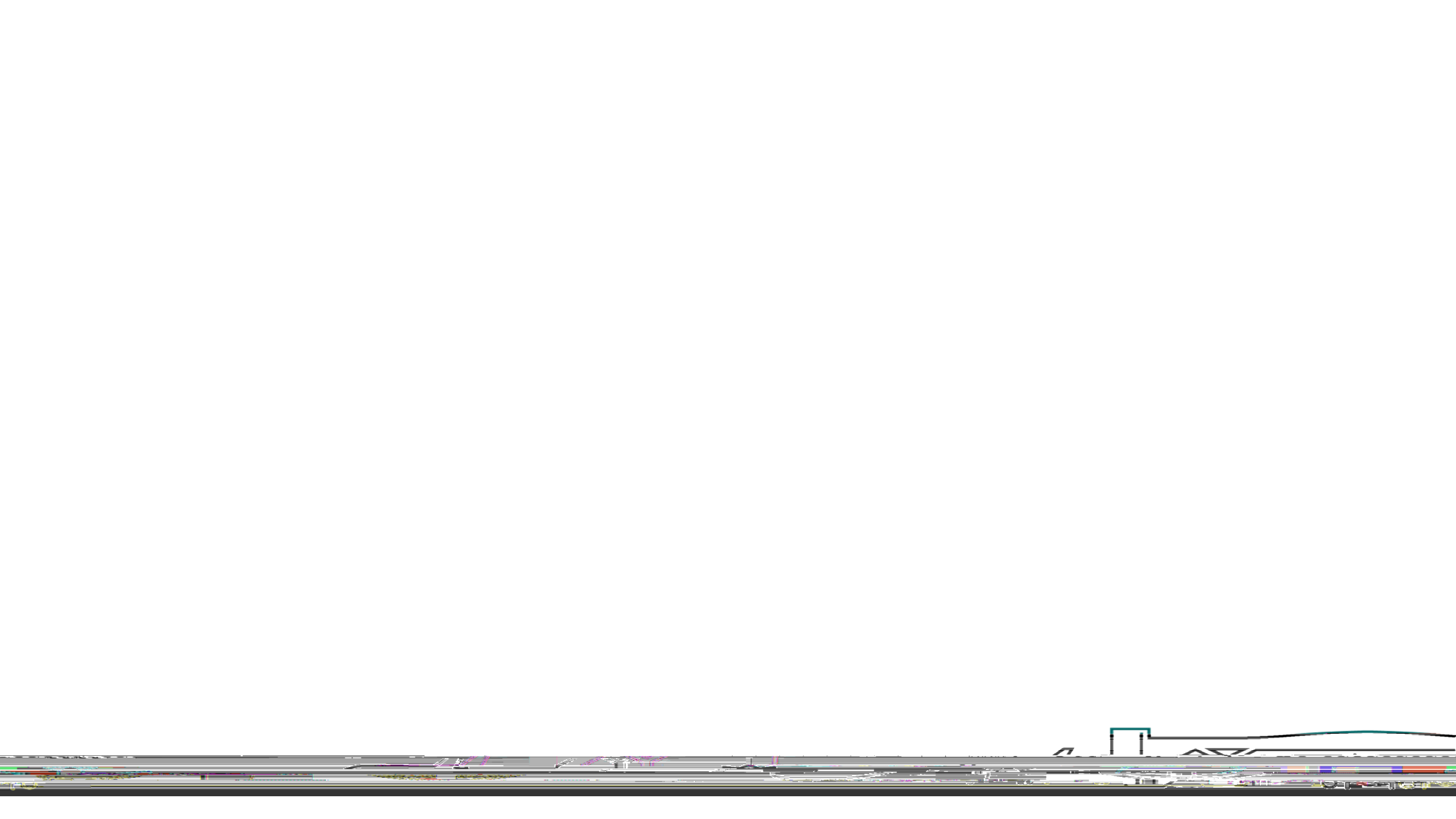
Gatwick Airport Update

Richard Lennard, Economic Partnerships Manager

Crawley Economic Recovery Taskforce Group

21 July 2021

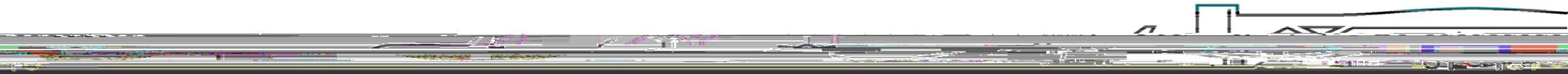


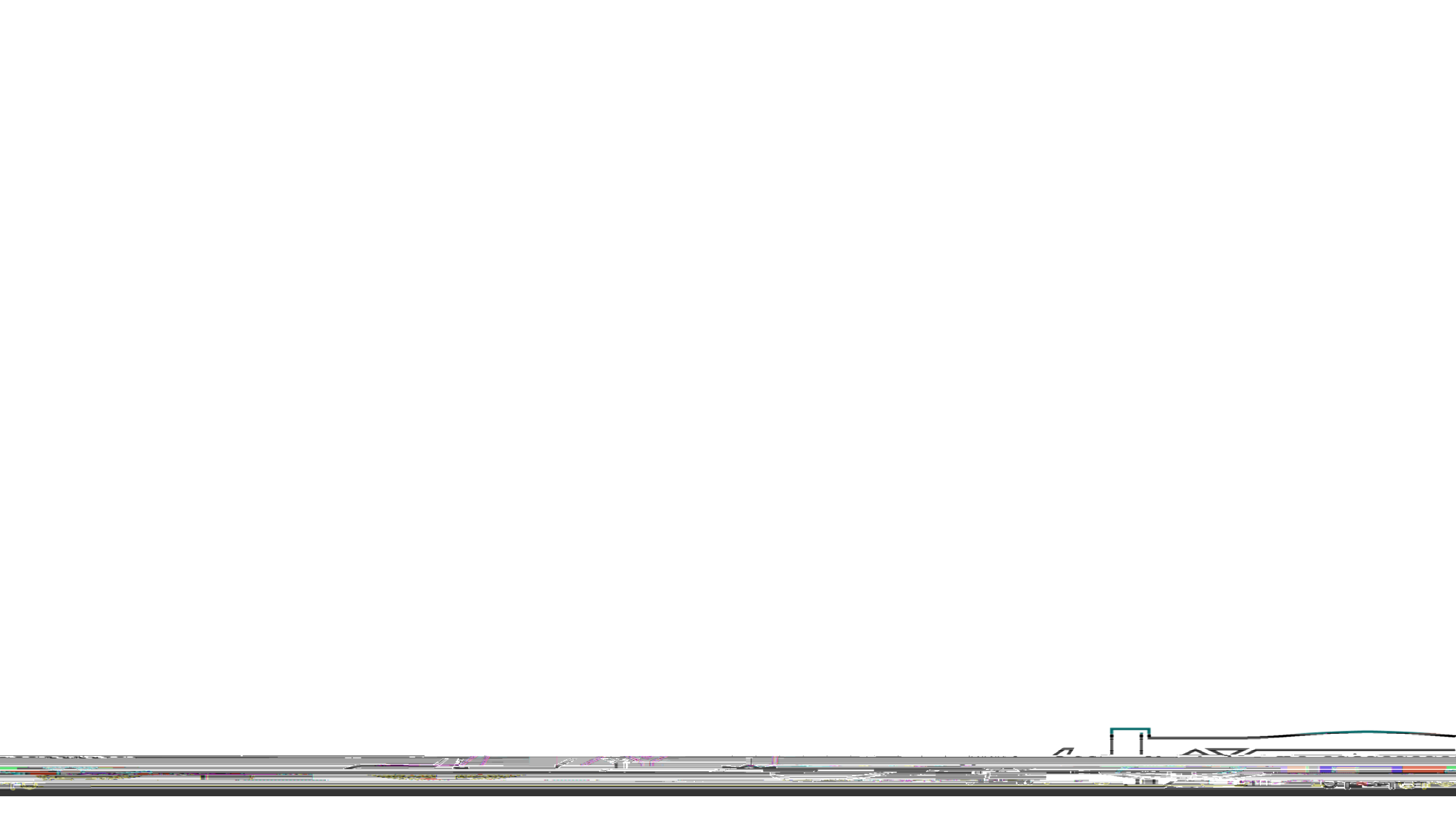


International Travel

International travel restarted on Monday 17 May with traffic light system in place:

May half term - **1,000 flights** to green destinations





Thank you

Keep Healthy, Keep Safe, Keep Flying

